



218

GWEH10, 16, 25../6B2 型

(NG) 10 25
350bar
1100L/min



目录

02-06
07-08
09-11
12-15
16-17
18-19
20
21-23

特点

-
- WEH
-
- DIN24 340A
ISO 4401 CETOP-RP 121H
-

GWEH../6B2.

DIN2430 ISO4401

250bar

GWEH../6B2.

1 2 4

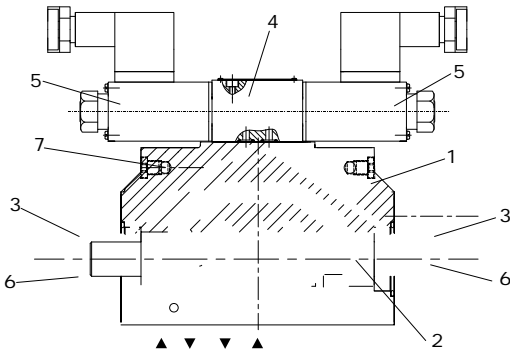
2 4 12V 24V 36V 110V

4

4

1

2	3	6	4
	7	4	4
2		2	
	2		6
	2	6	4
			Y
			T



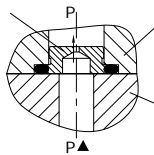
- 1-
- 2-
- 3-
- 4-
- 5-
- 6-
- 7-

GWEH25../6B2.

- 1 G4WEH.../6B2.....
- 2 G4WEH...H.../6B2..
- 3 G4WEH...H.../O6B2..
- 4 G4WEH...H.../OF6B2..

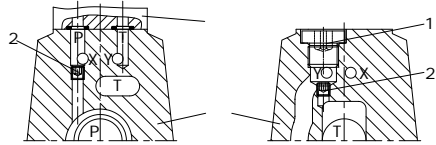
2 3 4

P

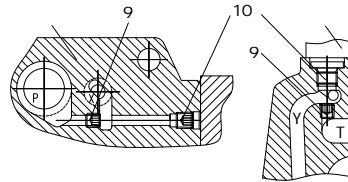


1 GWEH10.../6B2...

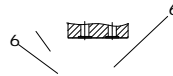
1	P	M6	(2)
	M6	(2)	
2	(1)	M6	(2)
	M6	(2)	

**2 GWEH16.../6B2...**

1	P	10
	M6	9
	M6	9
2	T	10
	M6	9
	M6	9

**GWEH16.../6B2...****3 GWEH25.../6B2...**

1	P	M12	6
	M12		
2	T	M6	6

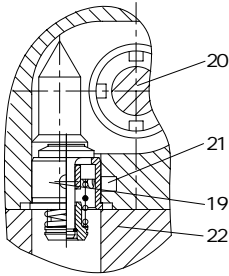
**GWEH25.../6B2...**

19

C Z F G H P S T V

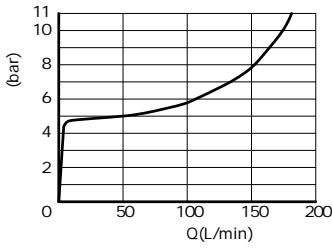
P

10



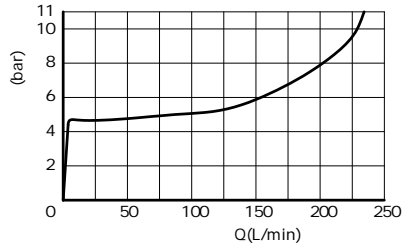
GWEH16.../.../6B2..PO.45

- 19 -
- 20 - P
- 21 - X
- 22 -



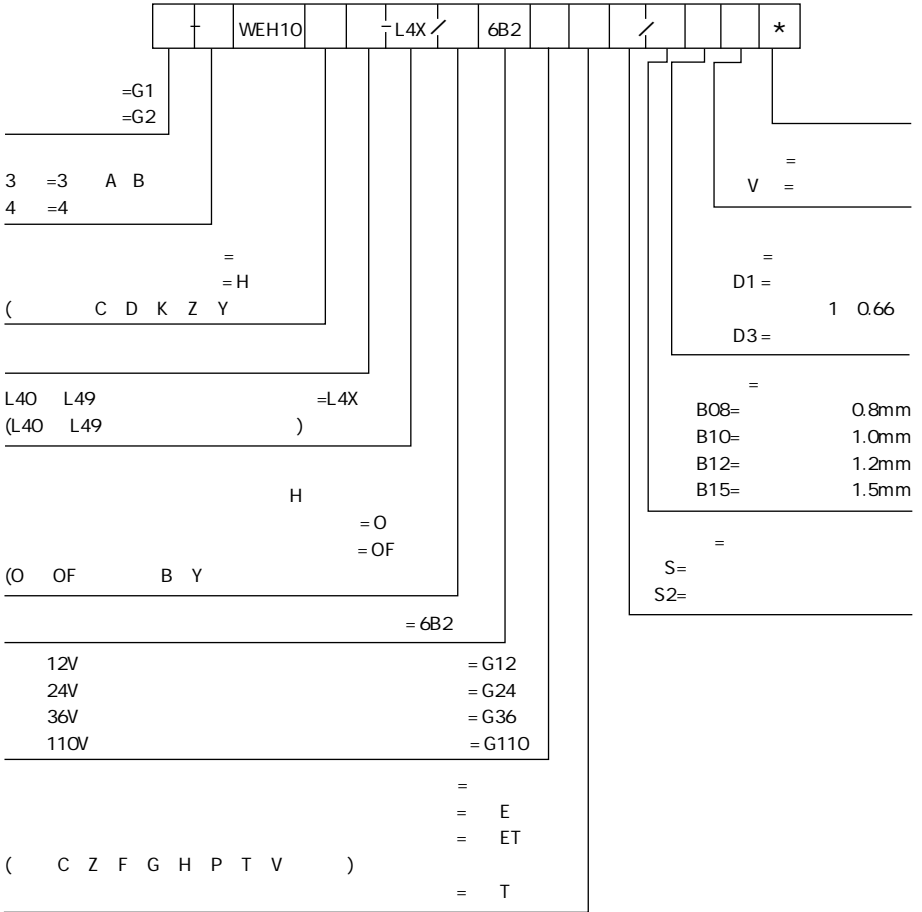
GWEH16.../6B2..

: HLP46 =40 ± 5)

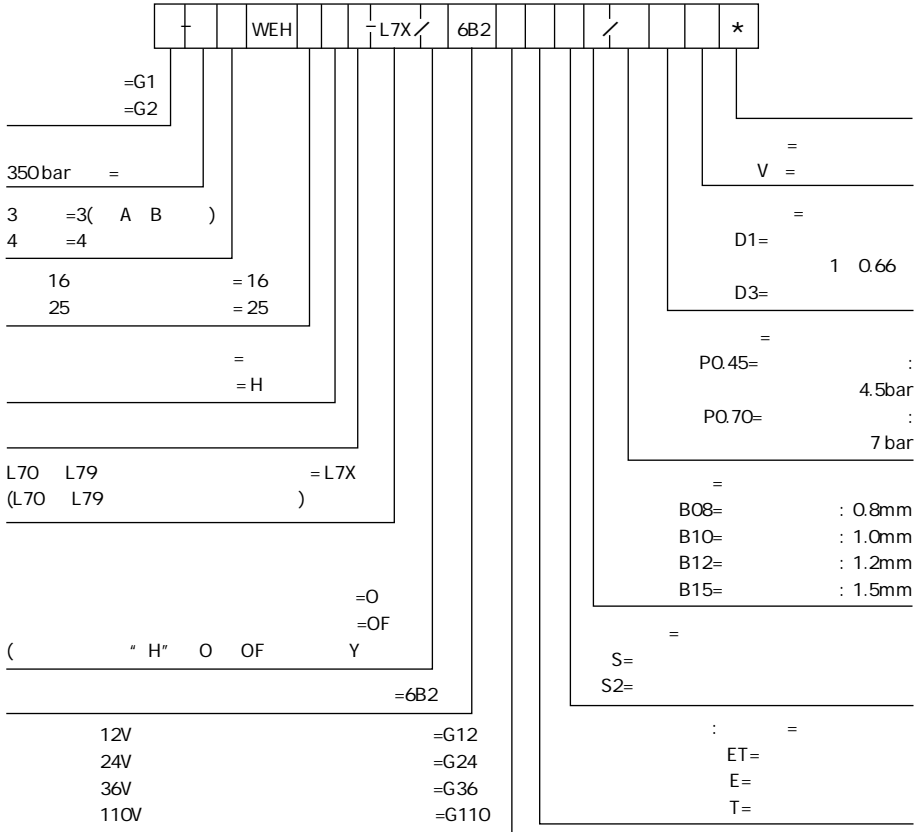


GWEH25.../6B2..

: HLP46 =40 ± 5)



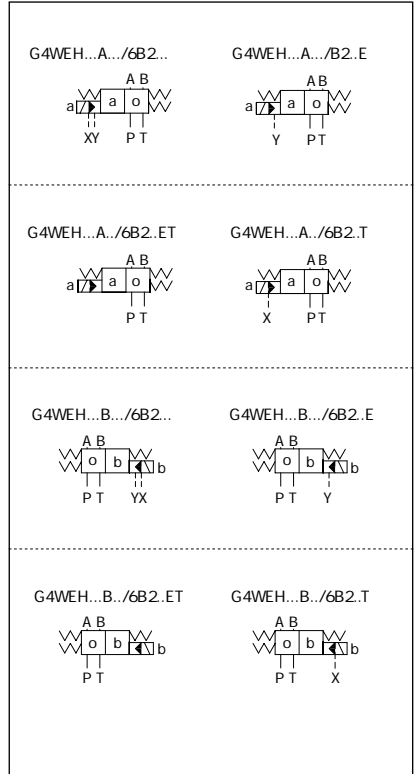
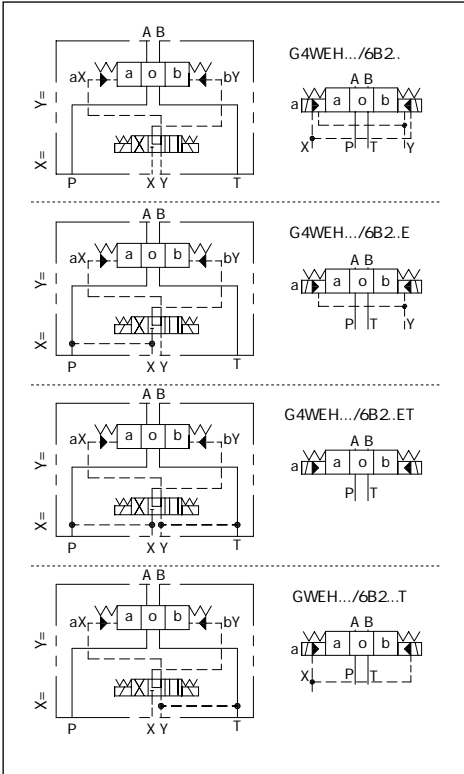
- :
1. GWEH10../6B2. C Z F G H P T V
T Y
 2. () 250bar
 3. G1 EXd Mb G2 EXd CT4Gb

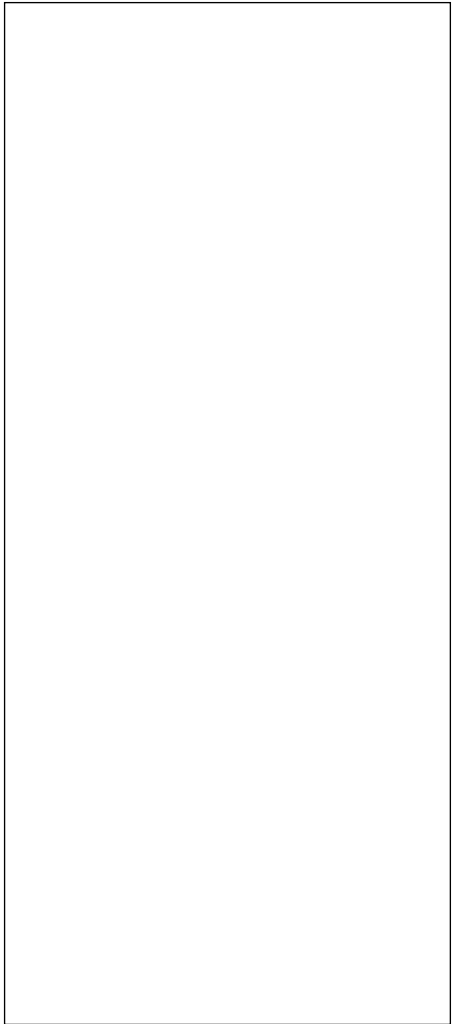
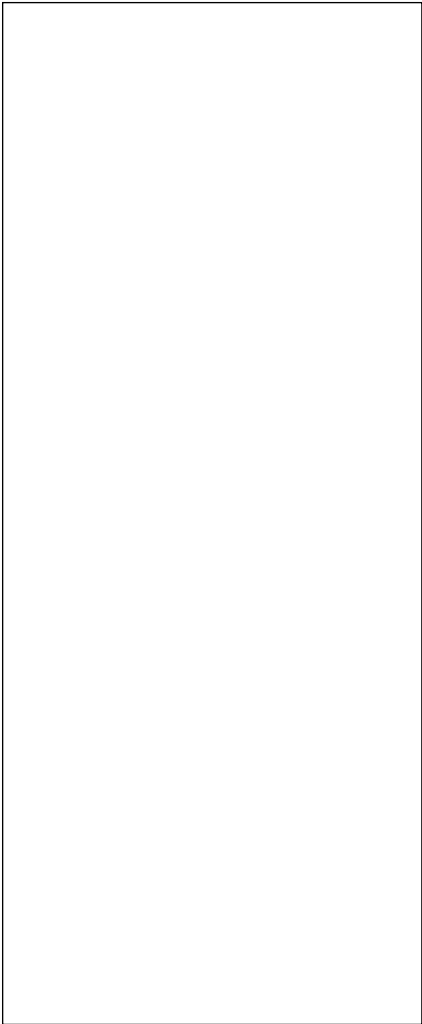


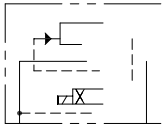
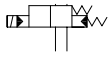
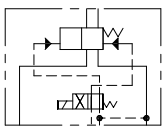
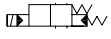
1. GWEH16 25../6B2... C Z F G H P T V
T (Y)

2. 250bar
3. G1 EXd Mb G2 EXd CT4Gb

A B







1.

1). GWEH10.../6B2...

	: P A B	bar	315							
T		bar	315							
		bar	210							
Y		bar	210							
		bar	10							
		bar	10							
	(C, Z, F, G, H, P, T, V)	bar	7							
	(C, Z, F, G, H, P, T, V)	bar	4,5							
		bar	250							
			-30 +80 ()							
			-20 +80 ()							
		mm ² /s	2.8	500						
		cm ³	2.04							
		cm ³	4.08							
		bar	70	140	210	250				
		ms	65	60	55	50				
		ms	80	75	70	65				
		ms	30							
		ms	35	40	30	35	25	30	20	25
		L/min	35							
			HC HD HK HZ HY							
		kg	7.8							
		kg	9.1							
		kg	1.0							
		kg	0.5							

1.

2).GWEH16../6B2.

:P A B		bar	G-...WEH16../6B2...		
			350		
T		bar	250		
		bar	210		
Y		bar	210		
		bar	14		
		bar	14		
		bar	14		
		bar	C Z F G H P S T V 4.5		
		bar	250		
			-30	80	
			-20	80	
		mm ² /s	2.8	500	
		cm ³	5.72		
		cm ³	2	11.45	
* " O"					
		bar	50	150	250
-		ms	65	60	58
-		ms	65	55	50
* " O"					
-		ms	30		
-		ms	45	35	30
			C D K Z Y		
		L/min	35		
		kg	10.6		

*

1.

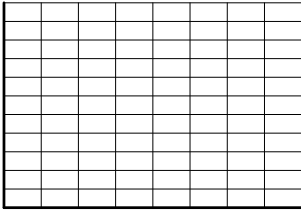
3). GWEH25../6B2..

		: P A B	bar	G-H...WEH25../6B2...			
				350			
T (bar)			bar	250			
			bar	210			
Y (bar)			bar	210			
			bar	13			
				13			
				8			
			bar	C Z F G H P T V 4.5			
			bar	250			
				-30 80 ()			
				-20 80 ()			
			cm ³	14.2			
			cm ³	28.4			
* " 0"							
			bar	50	140	210	250
-			ms	85	75	70	65
-			ms	160	130	120	105
* " 0"							
-			ms	40			
-			ms	125	100	90	80
				C D K Z Y			
			L/min	35			
			kg	19			

*

2

(± 10%)	12 24V 36V 110V
W	30
	+50
	+150
DIN40050	IP65



(HLP46 =40 ± 5)

		(mm ²)			
		P A	P B	A T	B T
GWEH 10../6B2.	Q	-	-	13	13
	V	13	13	13	13
	W	-	-	2.4	2.4
GWEH 16../6B2.	Q	-	-	32	32
	V	32	32	32	32
	W	-	-	6	6
GWEH 25../6B2.	Q	-	-	83	83
	V	83	83	83	83
	W	-	-	14	14

25um

A B

GWEH10../6B2.

(L/min)		(bar)		
		200	250	315
E J L M Q	U W R V	160		
H		160	150	120
G T		160		140
F P		160	140	120
C D K Z Y		160		

(L/min)		(bar)		
		200	250	315
HC HD HK	HZ HY	160		
HC.../O HD.../O	HK.../O HZ.../O	160		
HC.../OF...	HD.../OF...	160		
HK.../OF...	HZ.../OF...	160		

GWEH16../6B2.

(L/min)		(bar)					(L/min)		(bar)				
		70	140	210	280	350			70	140	210	280	350
E H J L M	Q U W R	300	300	300	300	300	C		300	300	300	300	300
F P		300	250	180	170	150	D Y		300	270	260	250	230
G T		300	300	240	210	190	K		300	250	240	230	210
S		300	300	300	250	220	Z		300	260	190	180	160
V		300	250	210	200	180	HC HD HK		300	300	300	300	300
							HZ HY						
							H F P G T S						
							V C Z		160L/min				

GWEH25../6B2.

(L/min)		(bar)					(L/min)		(bar)				
		70	140	210	280	350			70	140	210	280	350
E L M	U W Q	650	650	650	650	650	G D K Z Y	650	650	650	650	650	
G T							400	400	400	400	400	HC HD HK	650
F	650	550	430	330	300	HZ HY							
H	650	650	550	400	360	HC.../O	650	650	650	650	650		
J	650	650	650	600	520	HD.../O							
P	650	550	430	330	300	HK.../O							
V	650	550	400	350	310	HZ.../O							
R	650	650	650	650	580	HC.../OF...	650	650	650	650	650		
						HD.../OF...							
						HK.../OF...							
						HZ.../OF...							
							G Z V F H P						
							T 180L/min						

6

G4WE6../B2..

/	G4WE6J-6X/B2.. /
Y../... HY../... B../... HB../...	G4WE6Y-6X/B2..
: A C D K Z HA HC HD HK HZ	D G4WE6D-6X/B2.. G4WE6D-6X/OB2.. G4WE6D-6X/OFB2..

